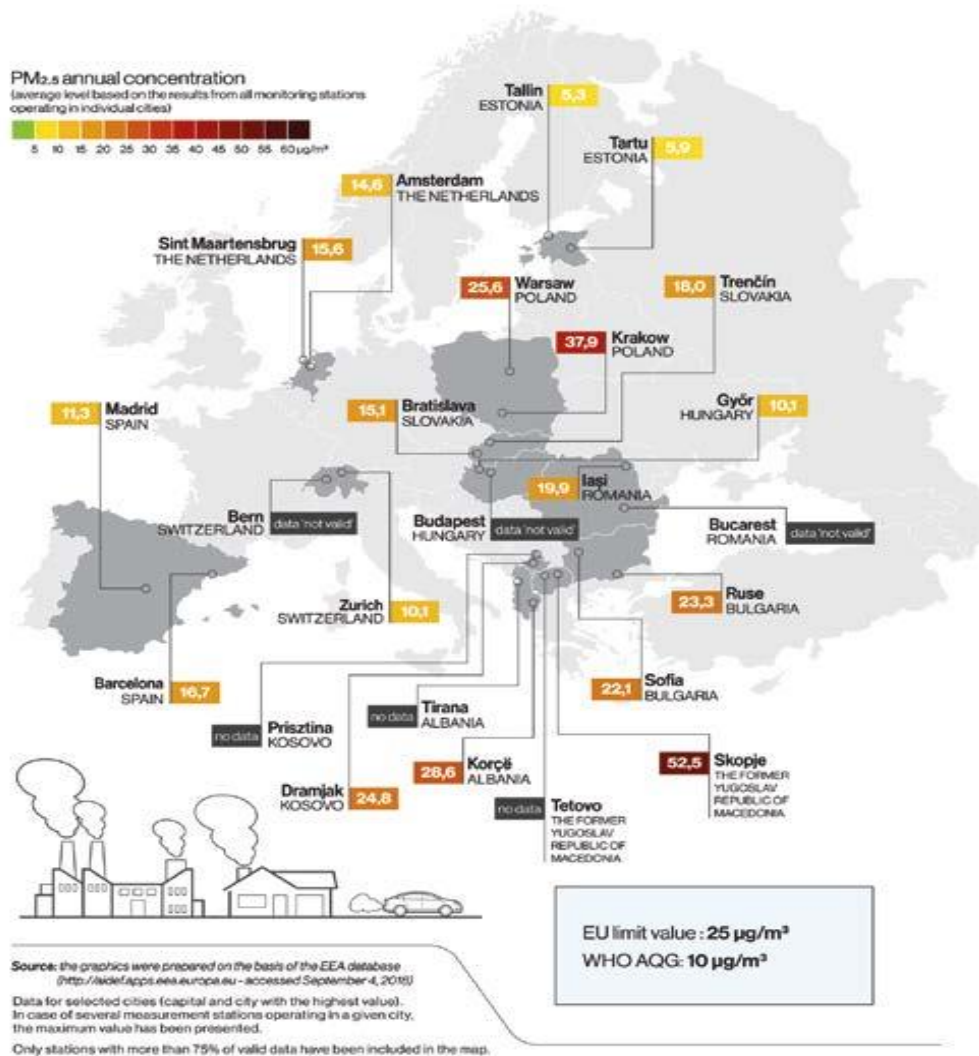


## Концентрация на фини прахови частици (2,5) в различните страни (извадка от доклада):

(Фини прахови частици 2,5 - частици с аеродинамичен диаметър до 2,5 микрона)

### COUNTRIES OBLIGED TO TRANSFER DATA TO THE EEA (EU MEMBERS) AND COUNTRIES COOPERATING WITH THE EEA



### COUNTRIES NOT OBLIGED TO COOPERATE WITH THE EEA

COUNTRY	CITY	REPORTING YEAR	POLLUTANT	DATA REPORTING METRIC	NUMBER OF MONITORING STATIONS	UNIT	AVERAGE LEVEL OF ALL STATIONS
GEORGIA	Tbilisi	2016	PM <sub>2.5</sub>	annual mean	4	µg/m <sup>3</sup>	21,5
MOLDOVA	Chişinău	2016	PM <sub>2.5</sub>	annual mean	1 (102 monitoring days)	µg/m <sup>3</sup>	15,3
ISRAEL	Jerusalem (Urban and Rural monitoring station)	2016	PM <sub>2.5</sub>	annual mean	2	µg/m <sup>3</sup>	16,5
	Tel Aviv (Traffic monitoring station)	2016	PM <sub>2.5</sub>	annual mean	5	µg/m <sup>3</sup>	20,6

Source: Table based on data provided by participants.